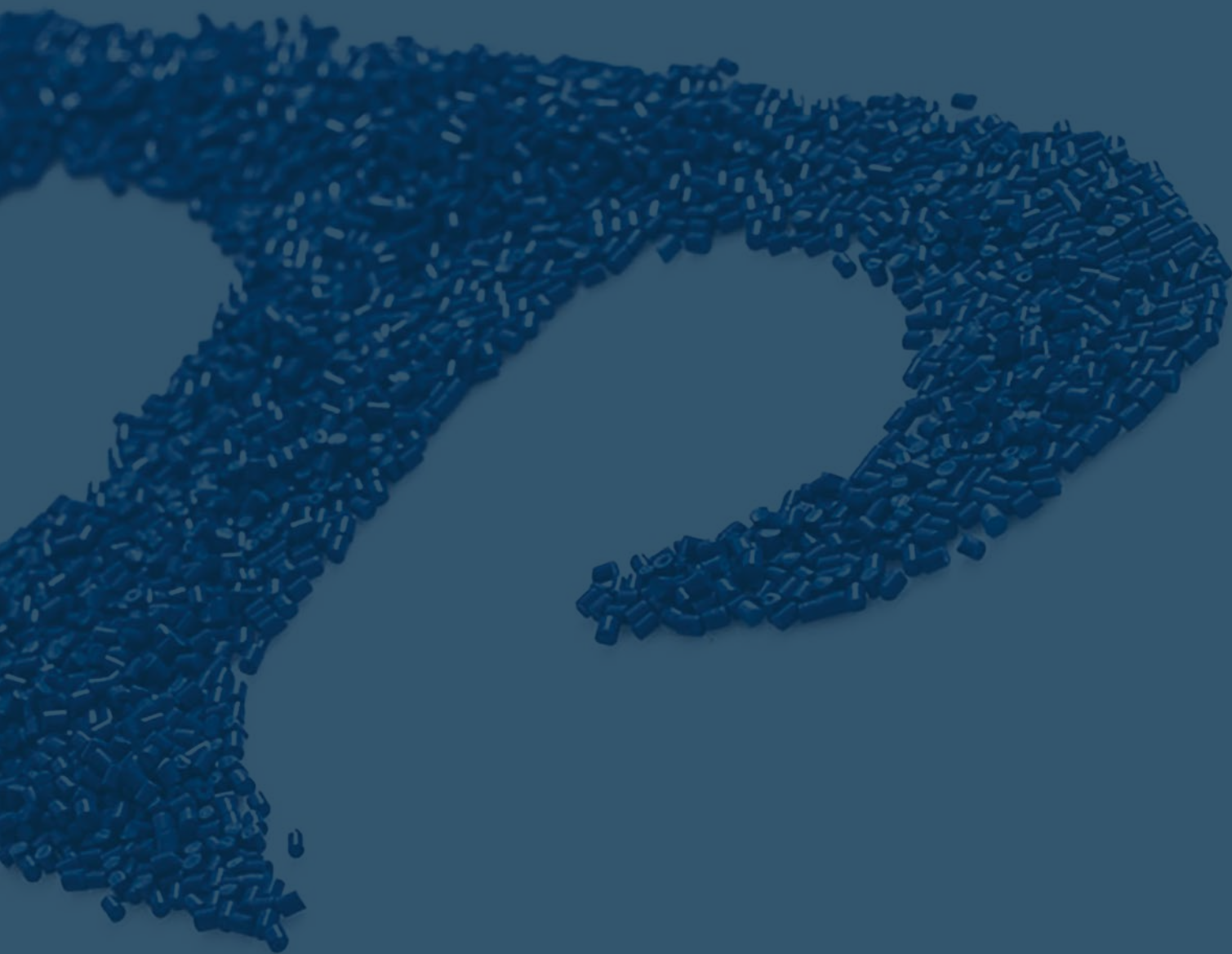


# FURNITURE COMPONENTS CATALOGUE



**WE BRING PLASTICS TO LIFE**



TALENT PLASTICS TARTU AS



## WHY THERMOPLASTICS?

Plastic is a material that is still used a lot in production and might be perhaps the only material that enables to produce a particular part or product. So why plastic, more specifically thermoplastic?

- Useful combination of properties (physical strength, corrosion resistance, electrical insulation, elasticity, chemical resistance)
- Can be scrapped and reused
- High speed in production
- Many options for moldability to reach complex forms
- Low scrap rates

### What is injection moulding?

Today the main technology, that Talent Plastics Tartu uses in production, is injection moulding. In simple words, it is a technology, where plastic parts are shaped by injecting heated raw material into a mould. One crucial part of the process is creating the right tool. Suffice to say that each mould is „custom made“ and can have their own specific features. Only when the tool is ready and adjusted according to the machinery it is possible to start production. During injection moulding, the main steps are:

Mould closes → injection → cooling → plasticizing the resin →  
Mould opens → ejection





## WHAT COMPANY IS TALENT PLASTICS TARTU?

Talent Plastics Tartu AS is a Swedish owned company operating in Tartu, Estonia. The company was established in year 2000 and the main area of expertise is to produce thermoplastic components with injection moulding.

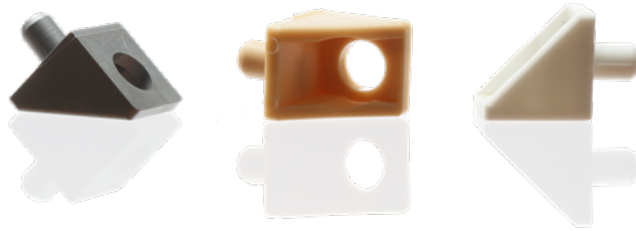
### **Our main capabilities are:**

- 1) 16 injection moulding machines
- 2) Ultrasonic welding
- 3) Hot stamping
- 4) Tampe printing
- 5) Laser marking
- 6) 3D measuring
- 7) Assembly – manual and automatic
- 8) All technical thermoplastics

Primarily produces Talent Plastics Tartu components for industrial machines, HVAC, end consumer products, automotive and medical industry. In addition, Talent has its own assortment for the furniture industry.

With the inhouse machinery the company can produce plastic components from 0,1 g to half a kg.

Talent Plastics Tartu's vision is to increase customer satisfaction by offering high-quality products at competitive prices and comprehensive solutions in product manufacturing to be the so-called plastic aid to its cooperation partners.



## TABLE OF CONTENTS

<b>D-handle</b>	<b>6</b>	<b>Cabinet suspension fittings</b>	<b>19</b>
<b>Shelf-supports</b>	<b>7</b>	<b>Covering plugs</b>	<b>23</b>
<b>KD-fittings</b>	<b>9</b>	<b>Wardrobe rail-holder</b>	<b>24</b>
<b>Expansion-plugs</b>	<b>13</b>	<b>Door-stop</b>	<b>25</b>
<b>Adjustable feet</b>	<b>14</b>	<b>Suitable screw information</b>	<b>26</b>
<b>Drawer-guides</b>	<b>16</b>	<b>Material information and colour options</b>	<b>27</b>
<b>Children-safety</b>	<b>18</b>		

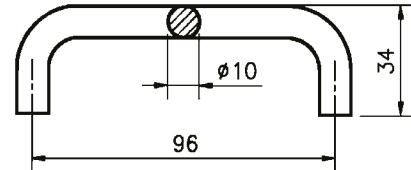


## D-handle



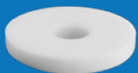
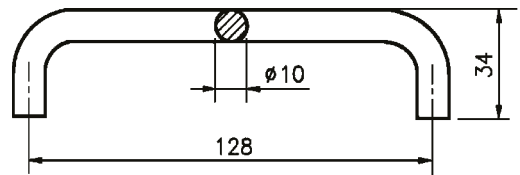
**D-Handle 96**

Art. No	Colour			
	09	59	89	
14300	X	X	X	500



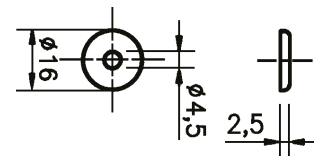
**D-Handle 128**

Art. No	Colour			
	09	59	89	
12140	X	X	X	500



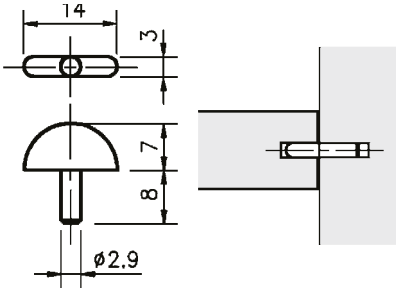
**Tray**

Art. No	Colour			
	09	59	89	
10240	X	X	X	10000




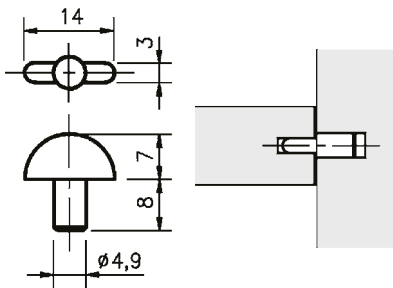


## Shelf-supports




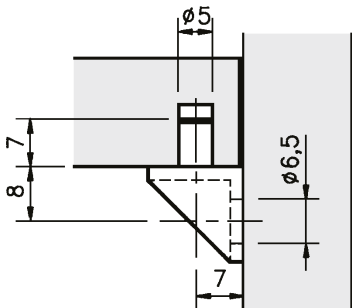
Mod. A 3

Art. No	Colour				
	09	29	59	89	
14181	X	X	X	X	4000




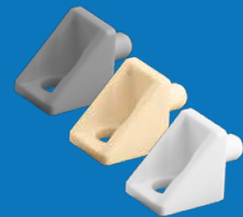
Mod. A 5

Art. No	Colour					
	09	29	59	89	700	
14182	X	X	X	X	X	35000



Shelf-support

Art. No	Colour				
	09	29	59	89	
12830	X	X	X	X	8000

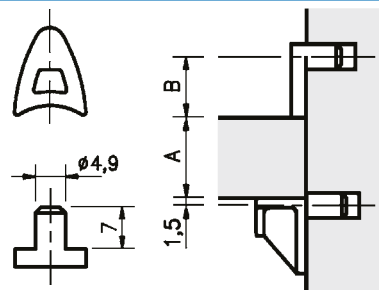


## Shelf-supports



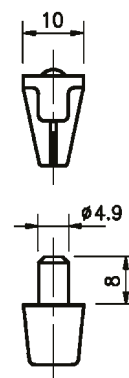
### Shelf clip

Art. No	Colour			Dim		
	09	29	59	A	B	
14020	X	X	X	16	14,5	20000



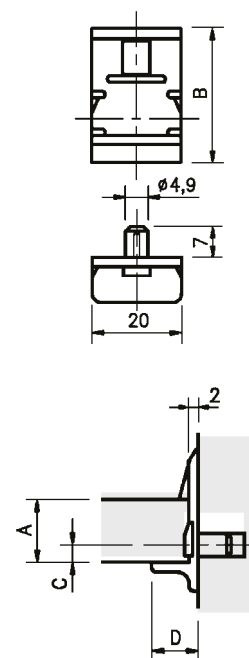
### Mod. E

Art. No	Colour				
	09	29	59	700	
15050	X	X	X	X	5000



### Mod. F

Art. No	Colour				Dim			
	09	29	59	89	A	C	D	
14361	X	X	X		12,8	4	9,8	7500
14362	X	X	X	X	16,8	4	9,8	2500
14363	X	X	X		18,8	9,5	9,8	2500
14364	X				19,8	9,5	11,8	2500








## KD-fittings

### Snapfix

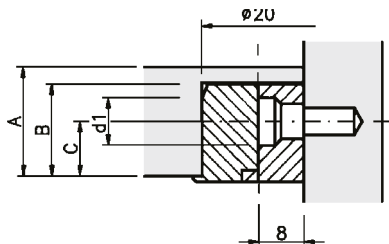
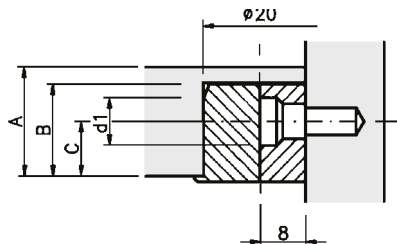
Art. No	Colour				Dim					
	09	29	59	89	A	B	C	D	1	
21601	X	X	X	X	16	12,5	6	-0,1	10	6500
22001	X	X	X	X	20	16,5	10	-0,1	10	5000
22202	X	X	X	X	22	19	11	-0,2	8	5000
22502	X	X	X	X	25	20	12,5	-0,2	8	4500
23001	X	X	X	X	30	22,5	15	-0,1	10	4000
23402	X	X	X	X	34	24,5	17	-0,2	8	3500



House




Dowel






## KD-fittings

### Snapfix S


Art. No	Colour				Dim			
	09	29	59	89	A	C	D	
17210	X	X	X	X	16	13	8	2600

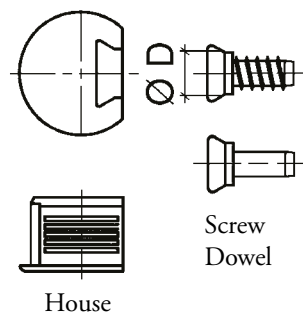
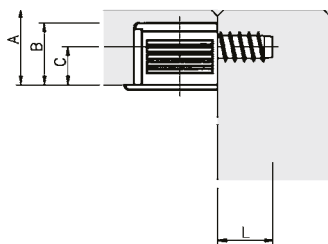
### Snapfix S

Art. No	Colour				Dim			
	09	29	59	89	A	C	D	
10010	X	X	X		16	12,5	6,2	5000



### Trapp S

Art. No	Ø D	
800 850	5x10	2600





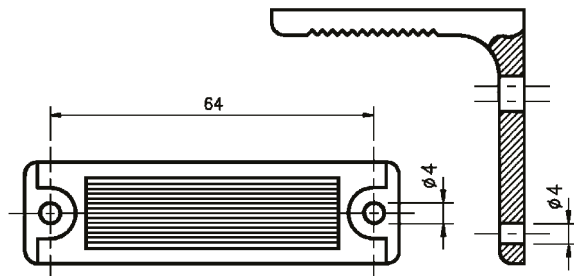
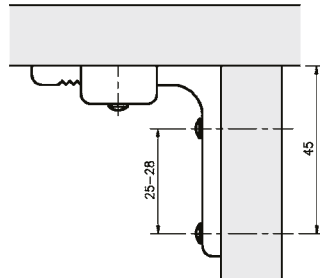
## KD-fittings

### Angle fitting, angular part

Art. No	Colour	
	09	
14480	X	1000

### Angle fitting

Art. No	Colour	
	09	
14490	X	1500




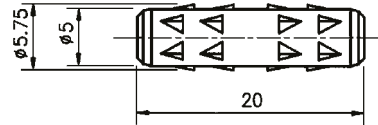


## KD-fittings

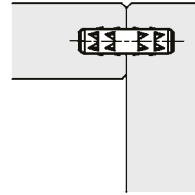


### Dowel


Art. No	
12710	17500
12718	100000

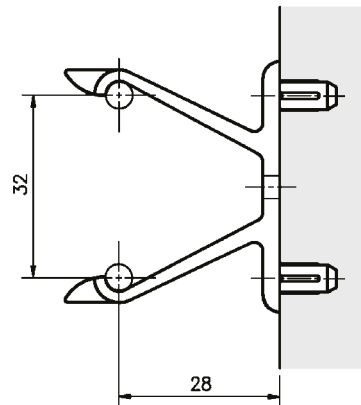


\*8x28 mm alternative option



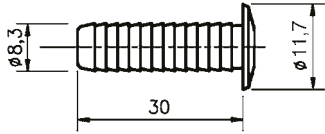
### Holder snaps

Art. No	
13510	1000





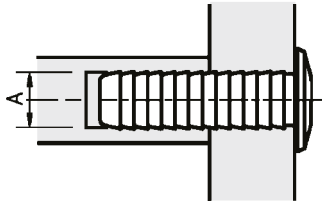
## KD-fittings



Nail 8x30

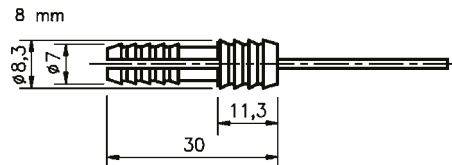
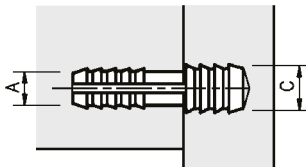
Art. No	Colour			
	09	29	89	
18280	X	X	X	6500

Drill	A
	8



## Expansion-plugs

Art. No		Drill	A	B
15081	12000		6,3-6,4	8

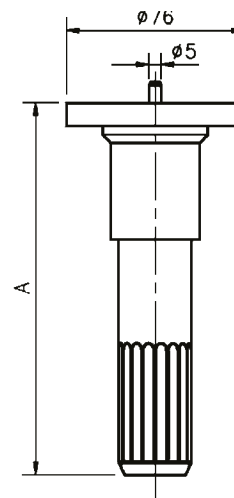




## Adjustable feet

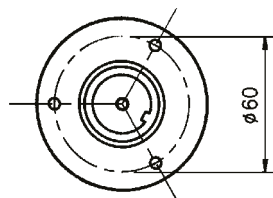
### Support leg

Art. No	Colour	
	09	
11340	X	300



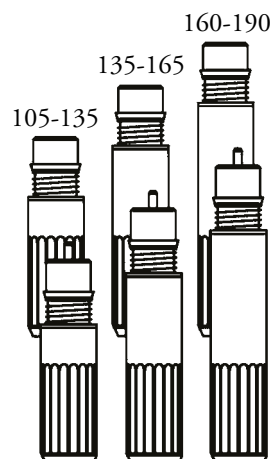
### Support leg

Art. No	Colour	A
	09	
17281-11	X	105-135
17281-12	X	135-165
17281-13	X	160-190



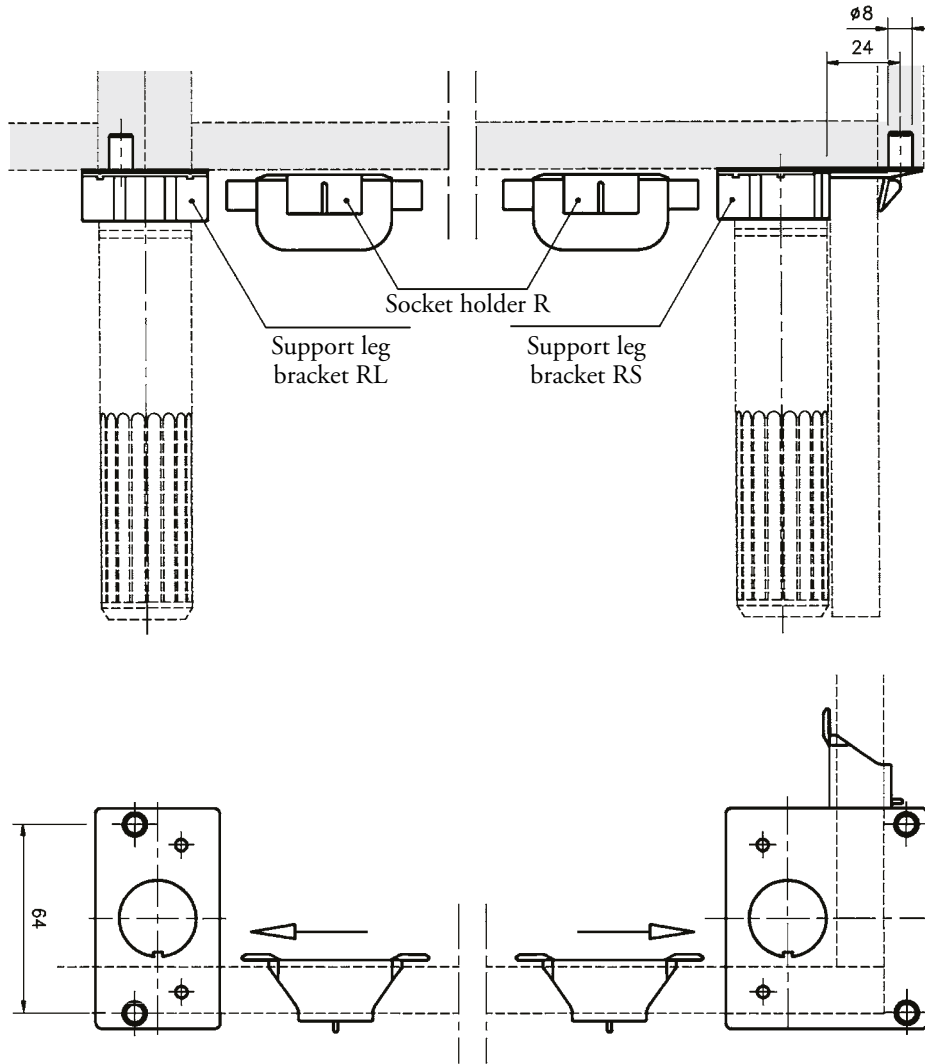
### Support leg with dowel

Art. No	Colour	A
	09	
17282-11	X	105-135
17282-12	X	135-165
17282-13	X	160-190





## Adjustable feet



**Support leg  
bracket RL**

Art. No	
17670	500

**Socket holder R**

Art. No	
17690	900


**Support leg  
bracket RS**

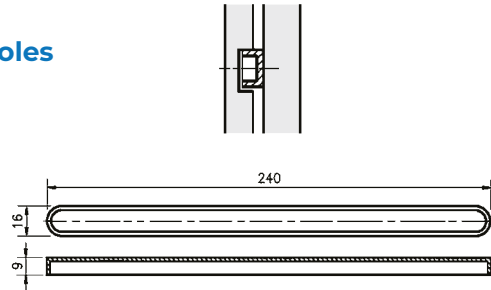
Art. No	
17680	400




## Drawer-guides

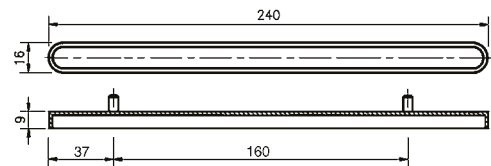
### Drawer-Guides 240 without holes

Art. No	Colour	
	09	
14097	X	1000




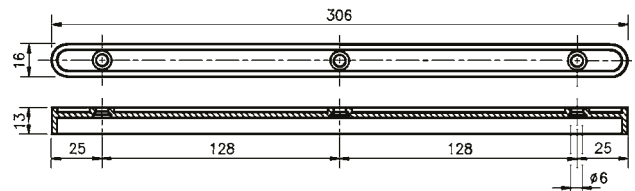
### Drawer-Guides 240 2T 37 c/c 160

Art. No	Colour	
	09	
14098	X	3000




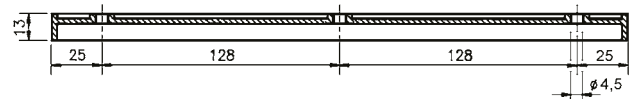
### Slide rail 306, 3 hole system screw

Art. No	Colour	
	09	
12345	X	2100



### Sliding rail 306, 3 holes 4.5

Art. No	Colour	
	09	
12346	X	2100



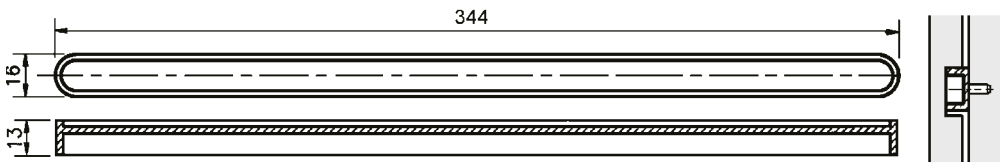




## Drawer-guides

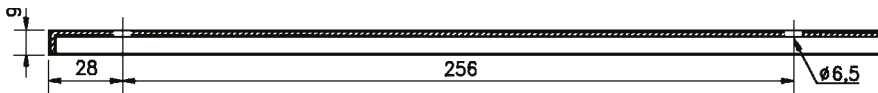
### Drawer-Guides 320, without holes

Art. No	Colour	
	09	
14091	X	1000



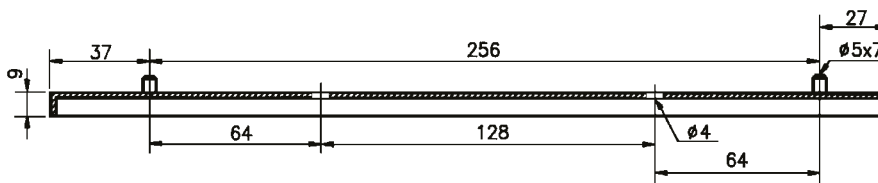
### Drawer-Guides 320, 2 hole 28 c/c 256

Art. No	Colour	
	09	
14092	X	1000



### Drawer-Guides 320 2T 37 c/c 256

Art. No	Colour	
	09	
14095	X	1000





## Children-safety

The pull-out stop prevents the drawer from opening more than 5–6 cm. The pull-out stop remains in position until the lock is detached. It is then no longer possible to move the box back and forth. The locked position means that there is no risk of crashing. On/Off function makes it easy to enable/disable.

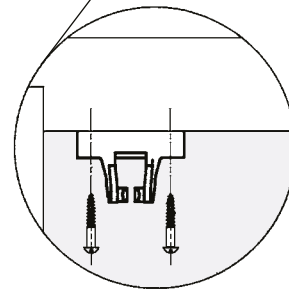
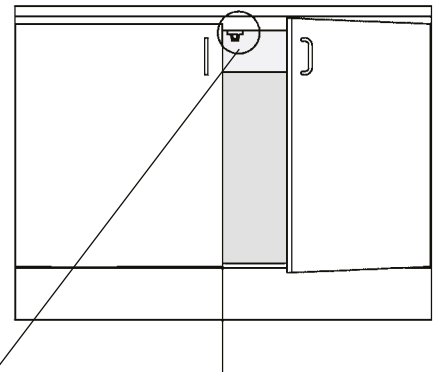
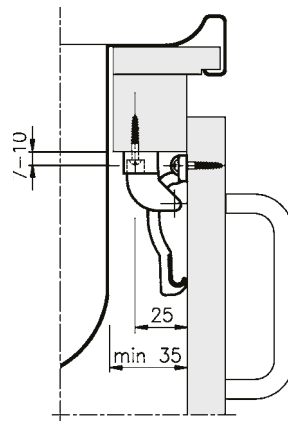
### Pull-out pin with clamp guard

Art. No	Colour	
	09	
10110	X	1000



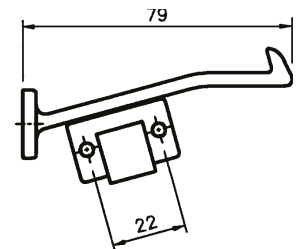
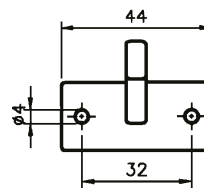
### Child safety lock TRIO

Art. No	Colour	
	18	
10160	X	500



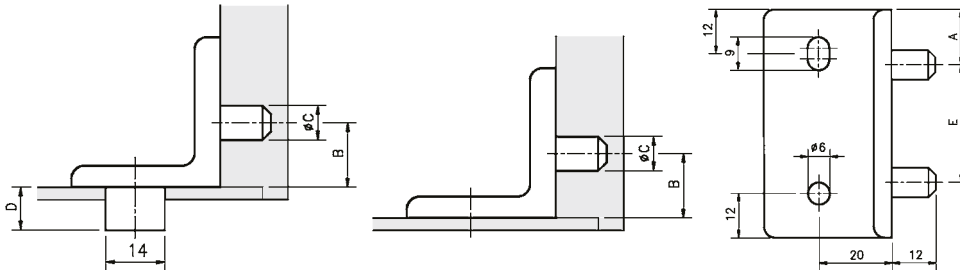
### Child safety lock DUO

Art. No	Colour	
	09	
15900	X	500






## Cabinet suspension fittings



### Brackets

Art. No	Colour	Right/ left	A	B	Ø C	D	E	Anm	
	09								
14342-01	X	-01 R	15	15	5	-	32	Ø6; 2 round holes	750
14342-02	X	-01 L	15	15	5	-	32		
14342-03	X	-02 R	15	15	8	-	32		
14342-04	X	-02 L	15	15	8	-	32		
14342-05	X	-03 R/L	18,5	15	8	-	32		
14342-06	X	-04 R	15	15	8	10	32		650
14342-07	X	-04 L	15	15	8	10	32		
14342-08	X	-05 R	15	15	5	10	32	Ø6; 2 oval holes	750
14342-09	X	-05 L	15	15	5	10	32		
14342-10	X	-08 R/L	15	15	8	-	32		
14342-11	X	-10 R/L	15	10	8	-	32		
14342-12	X	-11 R	15	15	7	-	32	Ø6; 2 oval holes	650
14342-13	X	-11 L	15	15	7	-	32		
14342-14	X	-12 R	15	24	5	-	32		
14342-15	X	-12 L	15	24	5	-	32		
14342-16	X	-13 R/L	15	28	5	-	32		
14342-17	X	-14 R/L	15	17	8	-	32		
14342-18	X	-15 R/L	31	12	7,2	-	1 tapp		




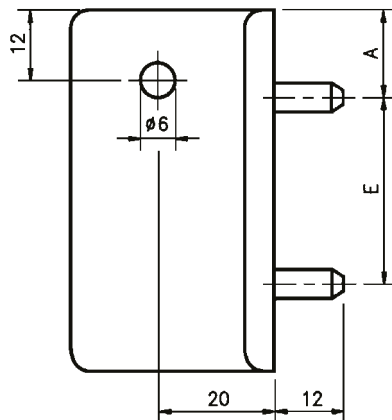
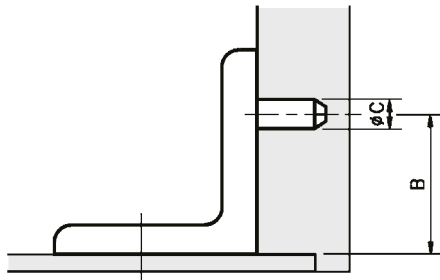




## Cabinet suspension fittings

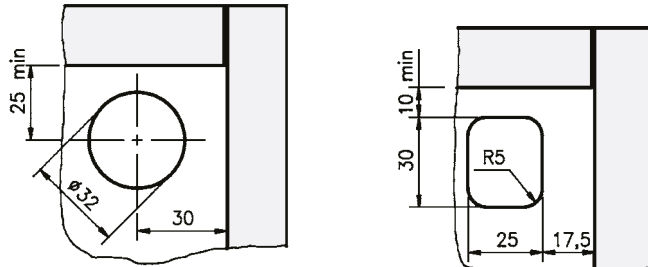
### Brackets

Art. No	Colour						
	09		A	B	Ø C	E	
14341-12	X	-17 R	15	24	5	32	650
14341-13	X	-17 L	15	24	5	32	650

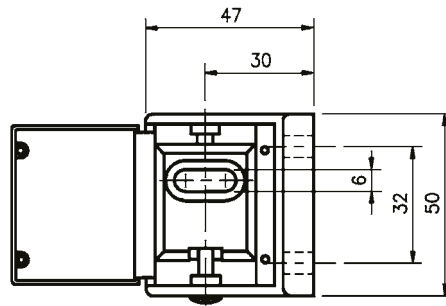




## Cabinet suspension fittings

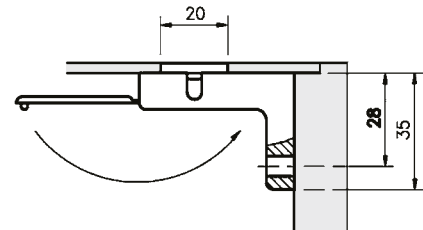


Hole in the Cabinets back.



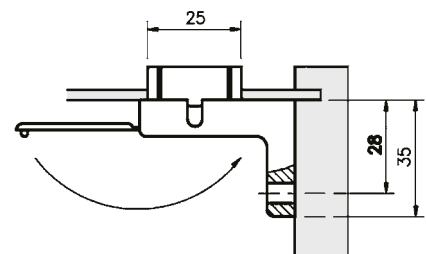
### Suspension bracket 28

Art. No	Colour	
	09	
10591	X	400



### Suspension bracket 28 dist 10

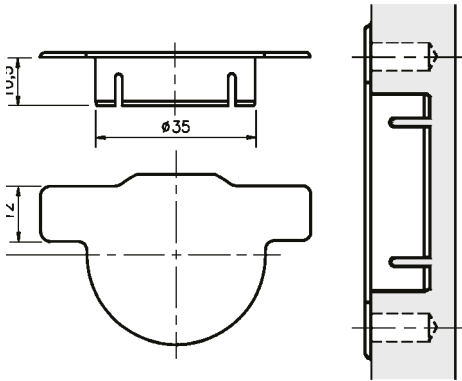
Art. No	Colour	
	09	
10592	X	350



To be closed after adjustment.



## Covering plugs



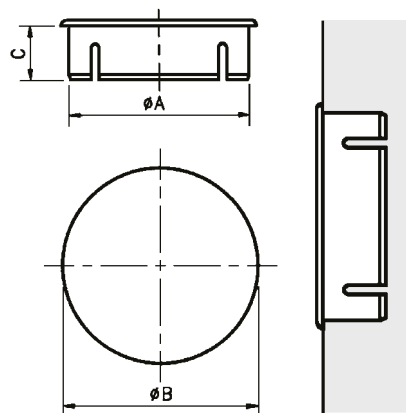
Fly plug 35

Art. No	Colour			
	09	29	59	
13612	X	X	X	3000



Molded plug

Art. No	Colour			Dim			
	09	29	59	A	B	C	
13611	X	X	X	35	38	10,7	3000

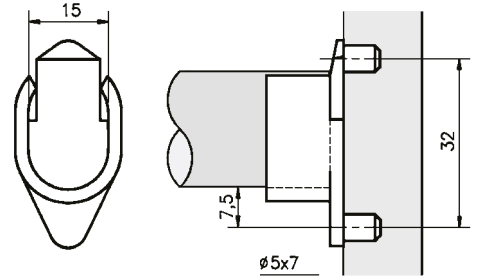




## Wardrobe holder oval

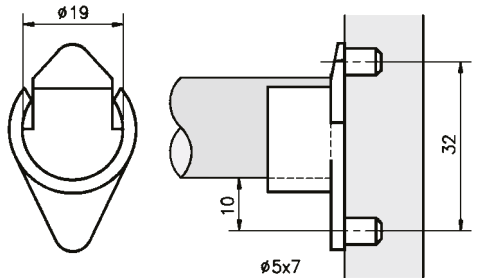
### Closet rod holder Oval

Art. No	Colour				
	09	22	29	59	
12571	X	X	X	X	2000



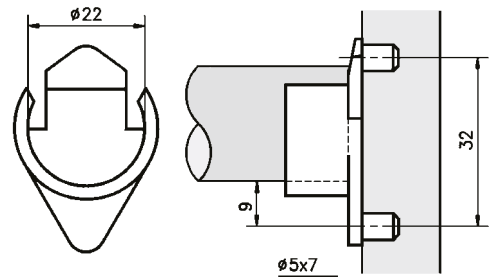
### Closet rod holder 19

Art. No	Colour				
	09	22	29	59	
12520	X	X	X	X	1750



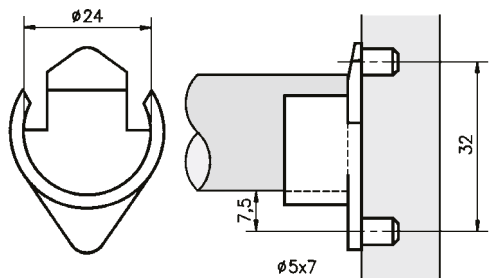
### Closet rod holder 22

Art. No	Colour				
	09	22	29	59	
12690	X	X	X	X	1500



### Closet rod holder 24-28

Art. No	Colour				
	09	22	29	59	
12572	X	X	X	X	2500




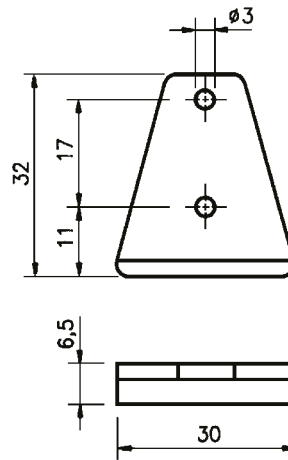
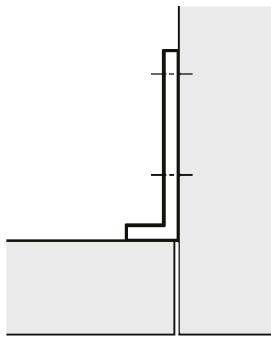




# Door-stop

## Door-stop

Art. No	Colour				
	09	29	59	89	
11170	X				4000



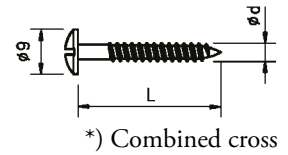


## Suitable screw information

### Screw LKH

Art. No	ød x L	Surface treatment
800 806	3,8 x 28	FZB

D-Handle 96/128, Tray



\*) Combined cross

### Screw system 81

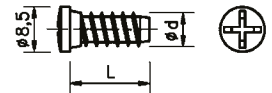
Art. No	ød x L	Surface treatment
800 820	6,3 x 9	FZB

Shelf support 12830



### Screw system 83

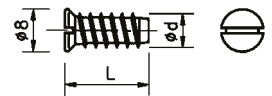
Art. No	ød x L	Surface treatment
800 821	6,3 x 13	FZB



PH. Nr 2

### Screw system 82

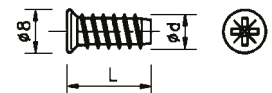
Art. No	ød x L	Surface treatment
800 822	6,3 x 11,5	FZB



### Screw system 84

Art. No	ød x L	Surface treatment
800 823	6,3 x 11,5	FZB
800 824	6,3 x 13	FZB

KD-Fittings Snapfix -01/-02

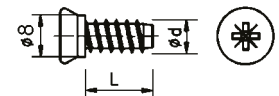


PZD 2

### Screw LKH

Art. No	ød x L	Surface treatment
800 840	6,3 x 11,5	FZB
800 841	6,3 x 7,5	FZB
800 842	6,3 x 10	FZB
800 845	6,3 x 11,5	FZB

Snapfix S 17210; 10010

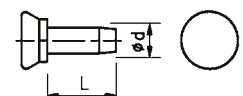


PZD 2

### Tapp S

Art. No	ød x L	Surface treatment
800 850	5 x 10	FZB

Snapfix S 17210; 10010



PZD 2



## Material information and colour options

There are several thermoplastics used in the plastic industry. For Talent's assortment, the chosen materials are PA, ABS, PEHD, PP, POM. Each material has its own strengths and for the given materials, the common factors are fatigue resist-

ance and toughness but some additional interesting features: PP has low material cost, PA endures high service temperatures and POM carries excellent spring properties.

PA	ABS	PEHD-PP	PP	POM
D-Handle Shelf-Supports KD-Fittings Expansion-plugs Cabinet suspension fittings	KD-Fittings (Holder snaps) Adjustable feet	Drawer guides	Covering plugs Wardrobe rail holder Door stop	Children safety

### Colour specification table

Art. No	Colour	Art. No	Colour
09	White	59	Brown
18	Grey	89	Black
22	Silvergrey	700	Transparent PC
29	Beige		

Other colours on request.



**Talent Plastics Tartu AS**

Tööstuse tee 4, Tõrvandi  
EE-61715 Tartumaa, Estonia

Phone: +372 742 0761  
tartu@talentplastics.ee

**[www.talentplastics.se](http://www.talentplastics.se)**



**TALENT PLASTICS TARTU AS**